

PATROLEYES

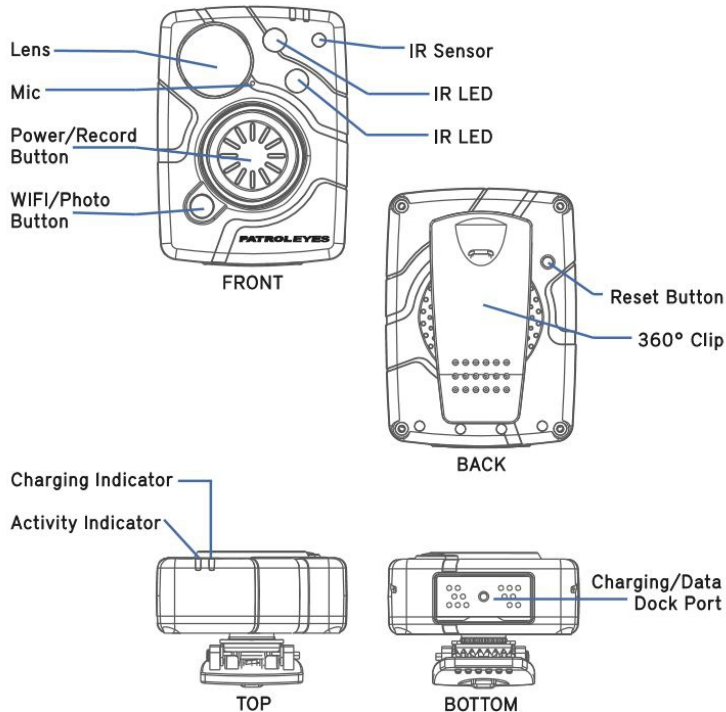
SC-DV10



User Manual

OPEN >>>>>

Camera:



- Fully charge the camera using the included USB cable and charging dock for 3-4 hours. The charging indicator will turn blue when charging. When the device is fully charged, the blue light will turn off.
- Confirm that the date and time on your device is correct and enter your device ID and badge ID through the camera management software.

Wearing your Body Camera Properly:

On your chest (uniform):

- Attach the camera clip to the front of your uniform.
- Rotate the camera clip 45° and clip it to the top of your uniform.

On your shoulder:

- Using the optional epaulette mount, clip the camera to the bracket on the mount and attach the mount to your uniform.

On your waist:

- Clip the camera to your belt. To aim the camera's lens higher, simply wedge or shim a small piece of foam or other material between the camera clip and camera as close to the base of the clip's attachment as possible.

Troubleshooting: If you are having problems with your camera, please first fully charge it and power it on, then press the reset button. Pressing the reset button will force the camera to shut off. Press the power button to turn the device back on and your device should now be working properly.

Note: Resetting the device will not delete any files.

Basic Operation:

- 1) Press and hold the Power button (*located in the middle of the camera*) for about 2 seconds. You will hear a chime and the camera will power on. A green indicator light on top of the camera will turn on, and the camera will turn on and enter into standby mode. The green LED indicator will remain on while the device is in standby mode.
- 2) The device settings, battery life, storage space, and saved media files can be viewed and edited via the Camera Management Software (*starting on page 14*) or the smartphone app (*starting on page 5*). The smartphone app will also allow for previewing the camera view before and during recordings.
- 3) Press and hold the Power button for about 2 seconds to power off the device. You will hear a sound and the camera will turn off. The green indicator light will also turn off.
- 4) When the camera's battery is less than 15%, two audio chirps will sound every two seconds and when the SD card is full the the red LED will flash only when the record button is pressed

Transfer & manage files on your computer:

(compatible with Windows XP, Vista, 7, 8 & 10)

- 1) Drop the camera into the charging station and connect it to your computer via the included USB cable.
- 2) Open the "Camera Management Software".
- 3) Enter your password to sign in (*instructions on page 15*)

Video Recording:

- a. To record a video, press the Record button (*located on the front of the device*). The unit will give five audio chirps and the red indicator LED will turn on, indicating that the camera is now recording.
- b. Press the Record button twice rapidly to stop recording. The unit will give seven audio chirps. The LED indicator will turn back to green, and the video will be ended and saved. The device will now return to standby mode.

One Touch Recording:

When the unit is powered off, press and hold the record button for 4 seconds until you hear an audio chirp. The device will turn on and automatically start video recording.

Photograph Feature:

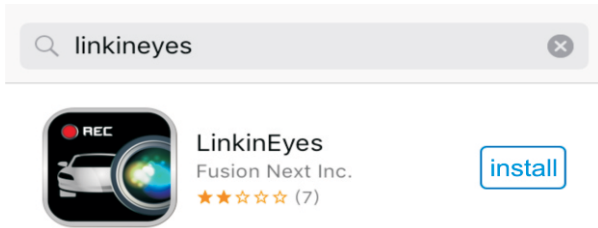
- a. To take photos, press the WiFi/Photo button (*located on the front of the device under the Recording button*). The camera will give three audio chirps and take a photo similar to a digital camera.
- b. To take pictures while video recording, press the Photo button and the camera will take a picture without interrupting the video recording.

WiFi Phone App

Install WiFi App

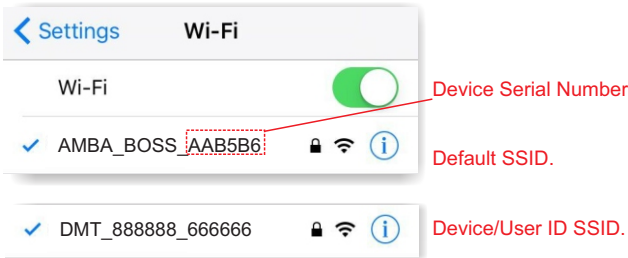
The WiFi Phone App displays recording time, battery indicator, device ID, storage capacity, and camera view.

a. Search “linkineyes” in the App Store, and install it on your smartphone or tablet.



b. Turn on the camera’s WiFi by pressing and holding the WiFi button for 3 seconds. The white WiFi indicator light will turn on.

c. Connect to the camera through your device’s WiFi. Select the WiFi network ending in your camera’s serial number, and enter the password. The default password is 0987654321.



WiFi Phone App

d. Open the “linkineyes” app to begin viewing on your phone. Tap the red Recording icon (*located in the center of your screen near the bottom*) to enter Preview Mode.

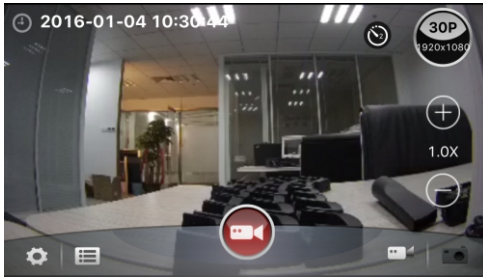


e. Press the Settings icon (*located in the bottom left corner of your screen*) to enter the settings menu. From here, you can adjust all of your camera’s settings from your smartphone or tablet.

f. Press the File Explorer icon (*located in the bottom left corner of your screen, to the right of Settings*) to view files saved on your camera. From here, you can view saved videos and photos and download them to your smartphone or tablet.

App Preview Mode - Video Mode

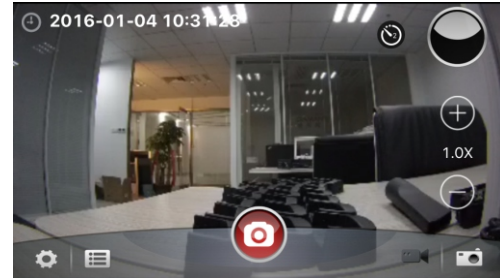
The Preview Mode is the main screen while using the WiFi app. Here you can view the current camera feed and record video.



- To begin recording video, press the red Recording icon (*located in the center of the screen*). The icon will begin flashing, and the camera will now record video.
- To end the recording, press the Recording icon. The icon will stop flashing, and the camera will stop the recording and save the video.

App Preview Mode - Photo Mode

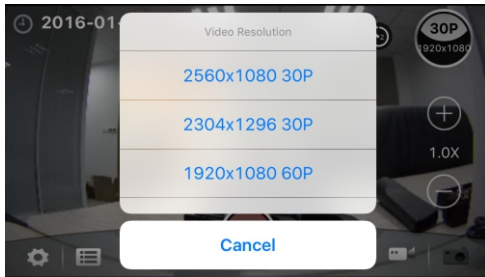
While in the Photo Preview Mode, the main screen shows the current camera feed and allows for taking photos.



- To change to Photo Mode, press the Photo icon (*located on the bottom right corner of the screen*). The icon will change to white and the camera will enter photo mode.
- Press the red Shutter icon (*located in the center of the screen*) to take a photo.
- Press the plus and minus icons (*located on the right side of the screen*) to zoom in and out.
- To return to Video Mode, press the Video icon (*located in the bottom right corner of the screen, to the left of the Photo icon*).

Video Resolution

a. To change the video resolution, select the “**Resolution**” icon (located on the top right of your screen) in video preview mode.



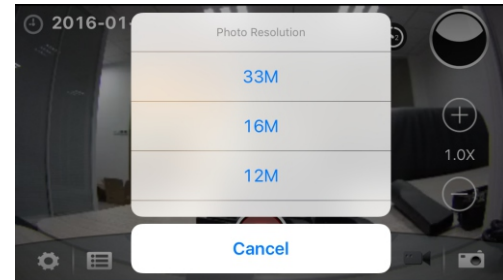
b. There are eight options to select from:

1. **2560x1080P @ 30fps**
2. **2304x1296P @ 30fps**
3. **1920x1080P @ 30fps**
4. **1440x1080P @ 30fps**
5. **1280x720P @ 60fps**
6. **1280x720P @ 30fps**
7. **848x480P @ 60fps**
8. **848x480P @ 30fps**

c. Select the option you prefer and the camera will update to that resolution. Press cancel to leave the camera on the current setting.

Photo Resolution

a. To change the photo resolution, select the “**Resolution**” icon (located on the top right of your screen) in photo preview mode.



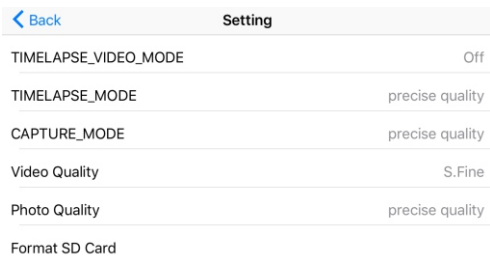
b. There are five options to select from:

1. **16MP**
2. **12MP**
3. **8MP**
4. **5MP**
5. **3MP**

c. Select the option you prefer and the camera will update to that resolution. Press cancel to leave the camera on the current setting.

App Settings Manager

To go to the **Settings** interface, press the settings icon (located on the bottom left corner of your screen).

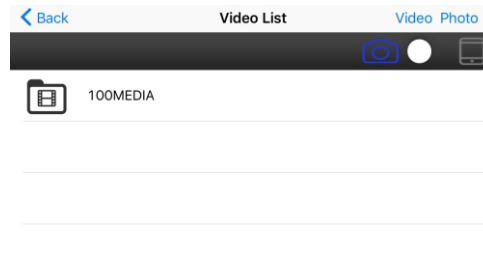


From here you can change camera settings. Just select the setting you wish to change and a pop up will open with available options. Select the option you prefer to change to that setting. When finished, press the back button to return to preview mode. All changed settings will update instantly.

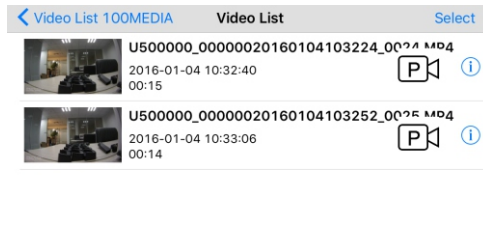
Note: This includes all of the settings changeable in the Camera Management Software. Please refer to that section of the manual (starting on page 18) for further details about individual settings.

App File Manager

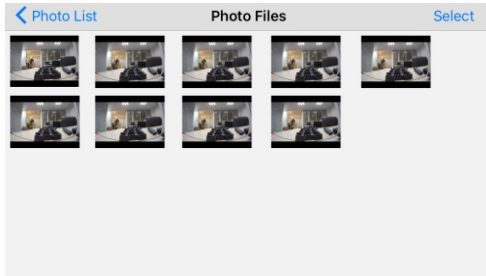
a. To go to the **File Manager** interface, press the files icon (located on the bottom left corner of your screen to the right of the Settings icon).



b. From here you can view and download saved photo and video files. Just select the file you wish to view and the file will open on your phone screen. If you wish to download, press the download icon on the right of the screen and the file will save to your phone.



c. To change from viewing all files to only photos or videos, select the photo or video icon (*located at the top of your screen*). The media list will then show only the selected file type. To return to viewing all files, tap the “All” icon.



d. To exit, press the back icon (*located on the top left corner of your screen*). The app will then return to preview mode.

Installing the Camera Management Software allows for viewing and downloading saved photos and videos, changing device settings, and syncing date and time.

Software Requirements

Windows XP (service pack 3)

Windows 7,8, or 10

Hard drive storage for archiving video (1TB recommended)

Software Download

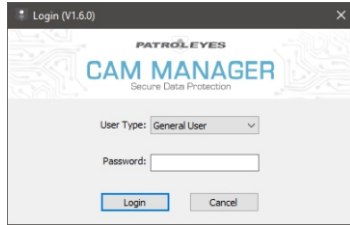
a. Download the Camera Management Software from our FAQs page: www.stuntcams.com/sc-dv10

b. Click “Cam Manager and Drivers” and download the .zip file. (*once downloaded right click and extract all*)

c. Connect your camera to your PC and install the drivers from the driver folder. You will need to disable driver verification. (*visit our FAQs page for a guide on installing the drivers*)

Management Software Login

a. Open the “Cam Manager” software on your computer. Place your camera into the charging station, and plug the station into your computer via the USB cable. Your camera will power on and connect to the PC.



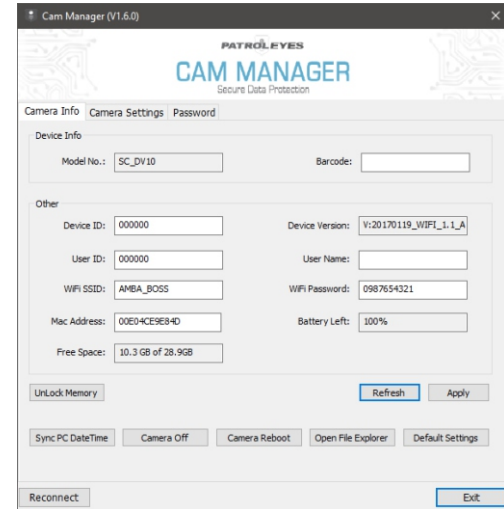
b. Choose the “User Type” and enter the password. There are two User Types, each with a different default password.

1. General User: This mode allows for viewing and downloading media files only. The default password is: 000000

2. Administrator: This mode allows for changing device settings as well as viewing and downloading media files. The default password is: 888888

Camera Info

a. After login, the Camera Management Software will open on the Camera Info tab.



b. From here you can change Device ID, User ID, and the WiFi password, as well as view battery level and free space on the camera. Change the settings as desired by entering the new settings into the text boxes, and click “Apply” to save.

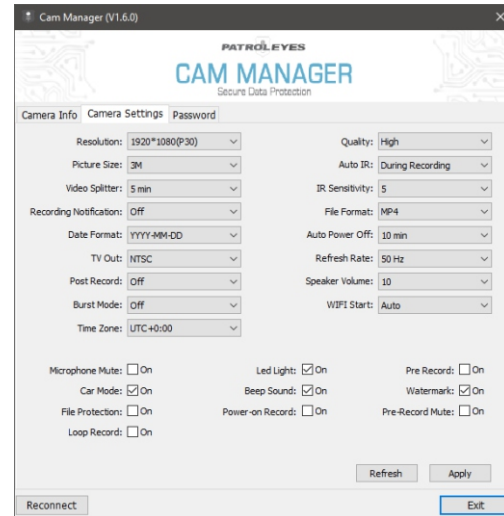
c. Click “Refresh” to update battery levels and free space if the camera has been left plugged in for a length of time.

d. Click “Open File Explorer” to view the camera’s files. The Management Software will close and the file manager will open. From here, you can view, transfer, and delete files. When finished, close the file manager by clicking the red “x”.

e. Click “Sync PC Date Time” to update your camera’s date and time. The date and time will be updated to your PC’s current date and time.

Camera Settings

a. Click the “Parameter Settings” tab in the Camera Management Software.



b. From here you can change device settings. Select the setting you wish to change, and a drop down will appear with all available options. Select the setting you want.

c. Click “Apply” to update settings with the new chosen options.

Resolution

a. Click the “Resolution” drop down. There are eight settings to choose from:

1. 2560x1080P @ 30FPS
2. 2304x1080P @ 30FPS
3. 1920x1080P @ 30FPS
4. 1440x1080P @ 30FPS
5. 1280x720P @ 60FPS
6. 1280x720P @ 30FPS
7. 848x480P @ 60FPS
8. 848x480P @ 30FPS

b. Click the setting you prefer and click “Apply” to save.

Picture Resolution

a. Click the “Picture Size” drop down. There are six settings to choose from:

1. 21MP
2. 16MP
3. 12MP
4. 8MP
5. 5MP
6. 3MP

b. Click the setting you prefer and click “Apply” to save.

Video Splitter

a. Click the “Video Splitter” drop down. There are five settings to choose from:

1. 20 minutes
2. 15 minutes
3. 10 minutes
4. 5 minutes
5. Off: Videos will not be segmented

b. Click the setting you prefer and click “Apply” to save.

Note: Video splitter refers to the length of video segments while the device is recording. The minute amount is the length of each video segment before the device begins a new video file. This will NOT stop the device from recording, it will just split your videos into smaller, more manageable files.

Recording Notification

a. Click the “Recording Notification” drop down. There are four settings to choose from:

1. 60 seconds
2. 30 seconds
3. 10 seconds
4. Off

b. Click the setting you prefer and click “Apply” to save.

Note: Recording notification will give audio chirps at the specified interval as long as the camera is recording. This will not affect the notifications at the start and end of recordings.

TV Out

a. Click the “TV out” drop down. There are two settings to choose from:

1. **NTSC (for US customers)**
2. **PAL (for EU customers)**

b. Click the setting you prefer and click “Apply” to save.

Post Recording

a. Click the “Post Recording” drop down. There are five settings to choose from:

1. **Off**
2. **10 seconds**
3. **20 seconds**
4. **30 seconds**
5. **60 seconds**

b. Click the setting you prefer and click “Apply” to save.

Pre Recording

Click the “Pre Recording” box to turn Pre-Recording on or off. When checked, the camera will record 5-60 seconds of video prior to the Record button being pressed, with length depending on video settings. For maximum length, set Video Resolution to the lowest setting.

WiFi Start

Click the “WiFi Start” option to have WiFi automatically turn on when the camera powers on. If the box is set to manual, WiFi must be turned on manually to connect to your smartphone.

Microphone Mute

Click the “Microphone Mute” box to turn audio recording on or off during video recordings. When the box is marked, the camera will not record audio during videos.

Quality

a. Click the “Quality” drop down. There are three settings to choose from:

1. **High**
2. **Medium**
3. **Low**

b. Click the setting you prefer and click “Apply” to save.

Note: Quality refers to the quality of saved videos and photos.

Auto IR

a. Click the “Auto IR” drop down. There are three settings to choose from:

1. **On**
2. **Off**
3. **During Recording**

b. Click the setting you prefer and click “Apply” to save.

Auto Power Off

a. Click the “Auto Power Off” drop down. There are six settings to choose from:

1. Off
2. 3 Minutes
3. 5 Minutes
4. 10 Minutes
5. 15 Minutes
6. 20 Minutes

b. Click the setting you prefer and click “Apply” to save.

Note: Auto Power Off will only power off the device when it has been in standby mode for the selected interval. This will NOT power off the device during recordings.

Refresh Rate

a. Click the “Refresh Rate” drop down. There are three settings to choose from:

1. 60 Hz
2. 50 Hz
3. Auto

b. Click the setting you prefer and click “Apply” to save.

Date Format

a. Click the “Date Format” drop down. There are three settings to choose from:

1. DD-MM-YYYY
2. MM-DD-YYYY
3. YYYY-MM-DD

b. Click the setting you prefer and click “Apply” to save.

Beep Sound

Click the “Beep Sound” box to turn audio notifications on or off. When checked, the camera will have audio notifications when video is recorded or photos are taken, and for low battery.

LED Light

The “LED Light” allows you to turn LED indicator lights on or off. When checked, the camera will have flashing LED lights when video is recording or photos are taken, and for low battery.

Watermark

Click the “Watermark” box to turn watermarking on for all saved photos and videos. When checked, watermarks will show Device and User ID followed by the date and time in the bottom right corner of all saved media files.

Burst Mode

a. Click the “Burst Mode” drop down. There are eight settings to choose from:

1. Off
2. 2 Pictures
3. 3 Pictures
4. 5 Pictures
5. 6 Pictures
6. 10 Pictures
7. 20 Pictures
8. 30 Pictures

Time Zone

- a. Click the “Time Zone” drop down. From here you can set your desired time zone.
- b. Select the Time Zone you prefer and click “Apply” to save.

Speaker Volume

Click the “Speaker Volume” drop down to select a number from 1 to 10. 1 being the quietest and 10 being the loudest speaker volume option.

File Protection

File protection gives you the option to encrypt your video files.

Note: You must have the PatrolEyes DEMS to view the files

IR Sensitivity

- a. Select the “IR Sensitivity” drop down. There are 10 settings to choose from ranging from 1 to 10. 1 will set your IR sensitivity to the lowest sensitivity while setting the option to 10 will set IR sensitivity to the highest sensitivity
- b. Click the setting you prefer and click “Apply” to save.

File Format

Select the “File Format” drop down to select your file format.

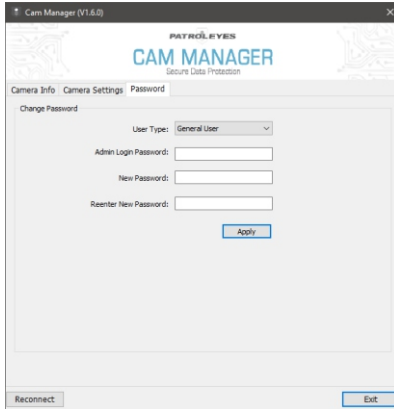
1. MP4 (recomended)
2. MOV

Car Mode

Click the “Car Mode” box to have the camera automatically power on and start recording when connected to power.

Passwords

a. Click the “Passwords” tab in the Camera Management Software.



b. From here you can change device passwords. Select the user type for the password that you wish to change. Enter the admin password, then enter the new password you wish to set for the user type, and confirm that password.

c. Click “Apply” to save the new password.

Note: Passwords can only be changed while logged in to the admin account. The admin password will always be required to make changes to any account passwords.

Drop-in Charging Station:

The included drop-in charging station allows you to charge the camera and connect to your PC. Plug in the included charger and connect the USB cable to the dock, and the blue light on the dock will turn on. Insert the camera by pushing the camera into the charging station until it clicks into place. The camera will then power on and begin charging. You can also connect to the PC by plugging the USB cable into the PC from the dock. When the camera is connected, it will power and charge while allowing PC connection via the Camera Management Software.

Optional Accessories:

- Suction Cup Mount
- Epaulette Mount
- Carrying Case
- Lens Protectors
- 8 Camera Docking Station
- PatrolEyes Protection Plus Program
- PatrolEyes DEMS
- PatrolEyes Cloud Storage
- PatrolEyes Video Redaction
- PatrolEyes Klick Fast Mounts

For a complete list of accessories and pricing, visit:
For the latest news and firmware upgrades, please follow us at:
www.stuntcams.com/patroleyesone
www.facebook.com/patroleyes
www.twitter.com/patroleyes